

How to identify *Epitrix papa* en *E. cucumeris*?

Epitrix papa adults:

- 1.7-2.2 mm long
- Black with a bronze shine
- Legs and antennae yellow

Epitrix cucumeris adults:

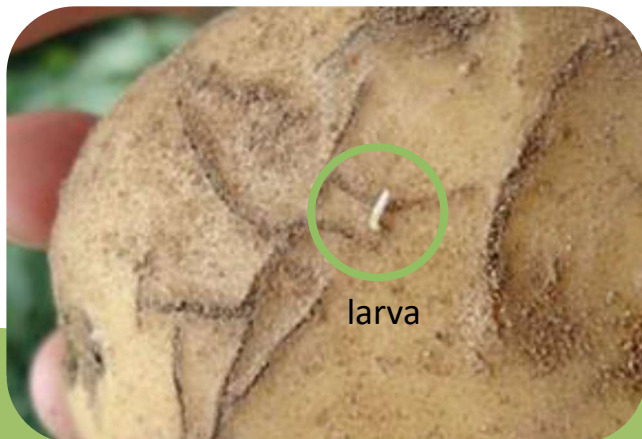
- 1.6-1.9 mm long
- Glossy black
- Legs and antennae pale



A *Epitrix cucumeris*

B *Epitrix papa*

The **larvae** of both species are about 5 mm long, white with a brown head.



larva

Can you help us?

Epitrix papa and *E. cucumeris* are on the **EPPO A2 list**. This list contains plant harmful organisms which are already locally present in the EU and cause **a lot of damage**. Therefore, it is important to report if you have seen this insect. **Early detection** allows for fast and efficient implementation of control measures against *Epitrix papa* and *E. cucumeris*, preventing this invasive plant pest from establishing itself.

If you spot (symptoms of) *Epitrix papa* or *E. cucumeris*:

- If possible, take a picture of the insect or damage and note the exact location.
- Report via waarnemingen.be/species/Q-organismen

More info?

Jochem Bonte

ILVO – Plant Sciene Unit
Burg. Van Gansberghelaan 96
9820 Merelbeke

Jochem.bonte@ilvo.vlaanderen.be

Tel. 09 272 24 60



project BEWARE&NOTE (RT 19/03),
financed by FOD



Source of info and images: (EPIXPP en EPIXCU)
<https://gd.eppo.int> with thanks to J.F. Germain

STOP *Epitrix papa* and *E. cucumeris*

These leaf beetles like potatoes!

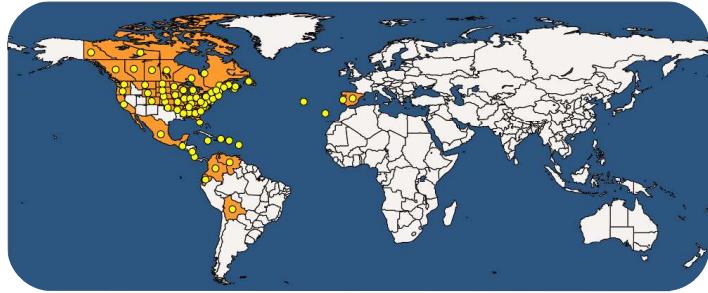


Epitrix papa (EPIXPP) - <https://gd.eppo.int>



In collaboration with EUPHRESKO and EPPO www.eppo.int

Distribution



In Europe, *Epitrix papa* and *E. cucumeris* are found only in **Portugal** and **Spain**, the **Azores** and **Madeira**. *Epitrix cucumeris* is also widespread in **North America** and in some countries of **South America** (Colombia, Costa Rica, Ecuador, Jamaica, Venezuela,...).

It spreads internationally through **infected seed potatoes** and locally through **soil** adhering to agricultural machinery.



Damage symptoms

The **beetles** live on the above-ground parts of the potato plant. They gnaw **characteristic holes in the leaf** (1.0-1.5 mm)

The **larvae** live in the soil and dig tunnels just under the epidermis of the potato. The **cork-like tunnels** are clearly visible on the tubers.

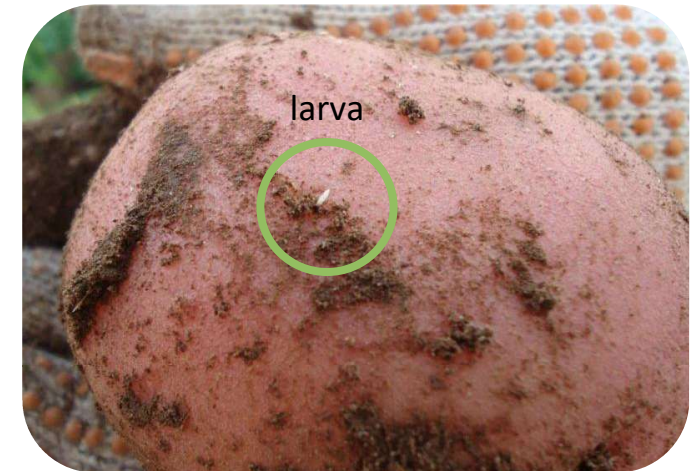


Epitrix papa (EPIXPP) - <https://gd.e>

Host plants

Both *Epitrix papa* and *E. cucumeris* cause damage to **potatoes** (*Solanum tuberosum*).

In Europe, 9 species of *Epitrix* also occur naturally but do not cause damage to potatoes.



Epitrix papa (EPIXPP) - <https://gd.e>