

JOIN US LOOKING FOR:

Megaplatypus mutatus

A small, yet serious invasive pest of poplars



Images: R. Griffo (IT) & M. Zubrik (SK)

Megaplatypus mutatus (PLTPMU) - <https://gd.eppo.int>

J	F	M	A	M	J	J	A	S	O	N	D
---	---	---	---	---	---	---	---	---	---	---	---

How do they look like?

- Adult beetles (see pictures): brown or black with “a head as broad as its pronotum and short antennae”
- Larvae: colour (white to yellow) and shape (elliptical to cylindrical) change over time

Where to find them?

- Larvae: feed on host wood and symbiotic ambrosia fungus in the galleries, inoculated by the adults
- Adult beetles: fly to new hosts, tunnel into the wood and create galleries across the entire width of infested trunks
- Host plants: healthy, standing deciduous trees with a trunk diameter of more than 15 cm
- Europe: In Italy, *M. mutatus* breeds in hazels (*Corylus*), apple trees (*Malus*), and poplars *Populus* (= main host)

How harmful are they?

- Economic damage: gallery presence reduces timber value or kills poplars by stem breakage
- Italy: damage to poplars and walnuts and reduced fruit yields (apple and hazelnut) or killed trees (hazels)

SCIENTIFIC NAME

Megaplatypus mutatus

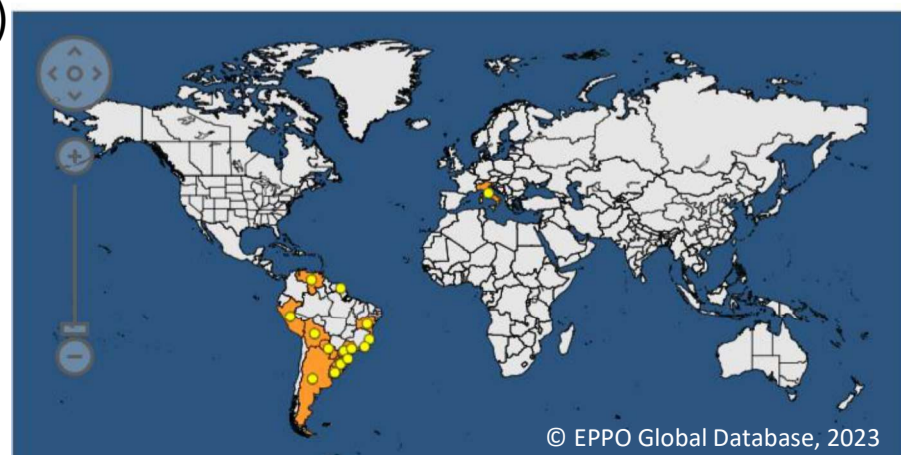
NATIVE RANGE

South America

REGULATORY STATUS

Pest recommended for EU regulation

DISTRIBUTION



© Eppo Global Database, 2023

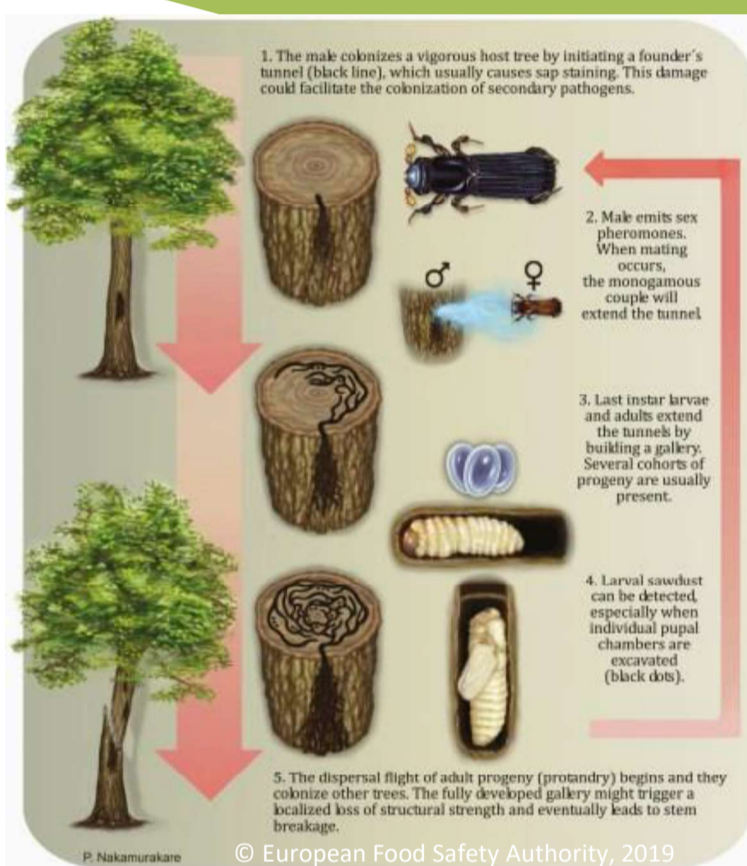


Megaplatypus mutatus



Image: R. Griffo (IT)

Life cycle



Surveillance methods

- Surveillance and monitoring of the most susceptible hosts (e.g. poplar plantations, shelter belts and fruit orchards) are feasible using pheromone trapping
- Also: visual detection of symptoms (boring holes on the trunks)



González-Audino et al. 2011

Similar species: *Platypus cylindrus*

- Adults: 6 to 8 mm long, cylindrical in cross section (hence *cylindrus*) and, seen from above, shaped like a long, narrow rectangle; very deep brown to black in colour; only in oak!
- The oak pinhole borer is the only platypodid native to Belgium
- The tunnels made by *P. cylindrus* do not weaken the timber to any great extent



Platypus cylindrus ©Udo Schmidt

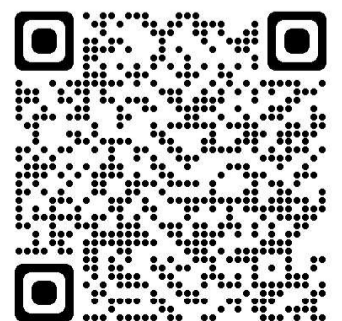
Pathways

Trade in *Populus* wood products and plants for planting

Contact us!

Jochem.Bonte@ilvo.vlaanderen.be

Learn more about *Megaplatypus mutatus*:



The research that yielded this info sheet, was funded in part by the Belgian Federal Public Service Health, Food Chain Safety and Environment through the contract RT 22/04 SCOLIBE 1

