

How to recognise Beech Leaf Disease?

Symptoms of Beech Leaf Disease

In spring and summer:

- **Dark green bands** between the parallel veins on the leaves (best visible when observed from below)
- **Thick, crinkled** and **leathery** leaves with **curled margins**
- Interveinal leaf **cupping** and **smaller leaves**



Photo: R. E. Marra, CAES



Photo: R. E. Marra, CAES



Photo: D. McCann



Photo: C. Metroparks

In autumn and winter:

- **Yellowish brown bands** on attached and fallen leaves
- **Bud abortion** and **branch dieback**
- **Canopy thinning** and **tree decline** within 3-7 years



Photo: R. O'Flaherty



Photo: F.T. Campbell

Can you help us?

A **leaf nematode**, *Litylenchus crenatae* subsp. *mccannii* is found in diseased beech leaves and buds.

Beech Leaf Disease and *L. crenatae* **have not been reported in Europe** so far.

Beech Leaf Disease is included in the **EPPO Alert List**. This list contains plant-harmful organisms that may present a phytosanitary risk for the region. Therefore, it is important to report symptoms of Beech Leaf Disease. **Early detection** allows for fast implementation of control measures so that Beech Leaf Disease **cannot become established**.

If you spot symptoms of Beech Leaf Disease:

Report via waarnemingen.be/species/Q-organismen

Add a photo of the damage and note the precise location.

More info?

Nicole Viaene

ILVO – Plant Unit

Burg. Van Gansberghelaan 96

9820 Merelbeke

nicole.viaene@ilvo.vlaanderen.be

Tel. 09 272 24 25

ILVO PCS



La santé des forêts en Wallonie

project NEMAFAGUS financed by

project FAGUSTAT



Beware of Beech Leaf Disease!

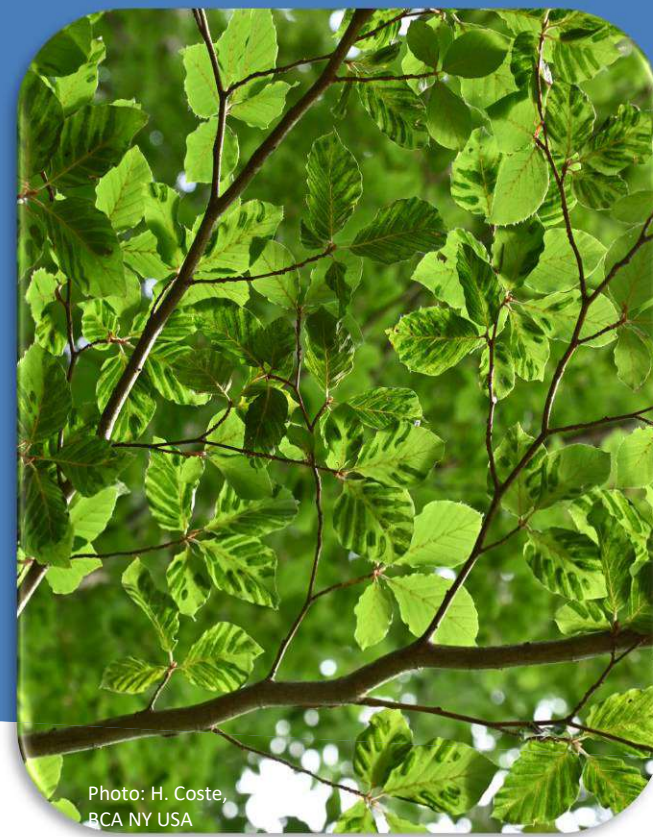
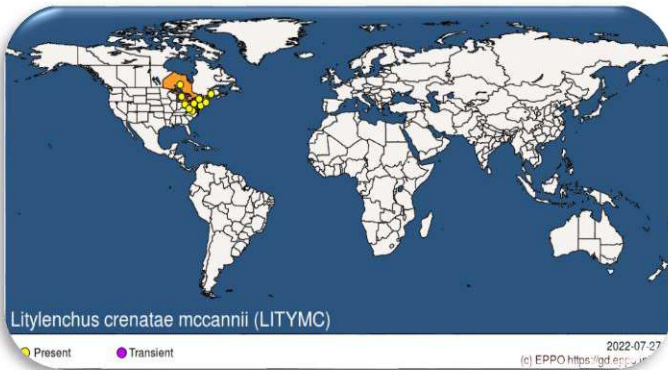


Photo: H. Coste, BCA NY USA



Photo: H. Coste, BCA NY USA

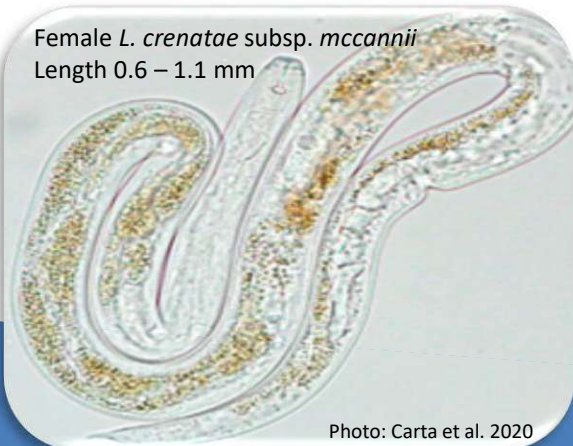
Distribution



Beech Leaf Disease was first detected in Ohio, **USA** in 2012. It is now present in more than 10 **north-eastern states** and in **Canada (Ontario)**. The nematode found in leaves with Beech Leaf Disease symptoms was also found in beech trees (*Fagus crenatae*) in **Japan**, but does not cause tree decline there.

Beech Leaf Disease affects beech trees (*Fagus* spp.) in forests, open landscapes, parks, arboreta and gardens.

How Beech Leaf Disease spreads is still unknown. It could be via windborne water, mites, insects, birds, beech nuts or imported plants.



Management



Phytosanitary measures

- Avoid moving **beech tree material** (branches, twigs, leaves and seedlings and nursery stock), **soil** or **organic matter** from affected areas.
- **Inspect beech nursery stock** for symptoms of Beech Leaf Disease before purchase.
- Do not **import** beech planting materials **illegally**.



Host plants



Until now, only **beech trees** (*Fagus* spp.) are reported to be affected.

Beech Leaf Disease affects *Fagus grandifolia* (**American beech**), different cultivars of our common *F. sylvatica* (**European beech**) and *F. orientalis* (**Oriental beech**).

Other beech species (*F. engleriana*, *F. crenatae*,...) are probably also hosts plants.

