

# JOIN US LOOKING FOR:

## Asian walnut moth

One of the most important pests of walnut



8-9 mm long  
18-23 mm  
wingspan



4.5 mm  
long

Images: Vlad Proklov & Vladimir Savchuk



### How do they look like?

- Adults: fore wings grey with transverse brown, white and black bands and lines; wing fringe grey with black points; antennae thin, light to dark brown
- Neonate larva: 2–3 mm long, cream-white to yellowish white with a dark-brown head
- Fully grown larva: 15–20 mm long, light greenish-cream to greenish-brown or reddish-brown; body at upper and lateral sides with small dark brown round warts, bearing long, pale hairs

### Where to find them?

- Host trees: common and black walnut (*Juglans* spp.)
- Damage is easily recognised by the accumulation of brown excrement at the larval entry hole in the fruit or shoots; damaged shoots often show signs of yellowing and wilting

### How harmful are they?

- Due to larvae feeding on fruits, the fruits become deformed and do not develop normally, which can greatly reduce yields

### SCIENTIFIC NAME

*Garella musculana*

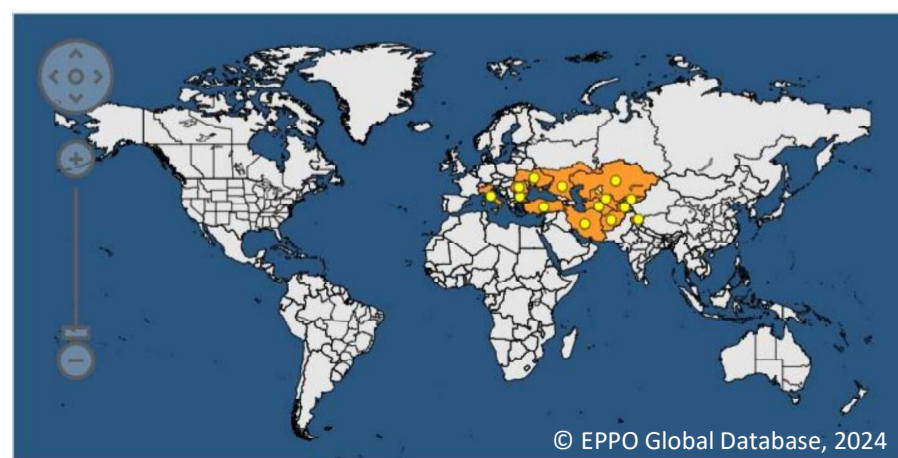
### NATIVE RANGE

Central Asia

### REGULATORY STATUS

Recommended for regulation as a quarantine pest

### DISTRIBUTION



© EPP0 Global Database, 2024



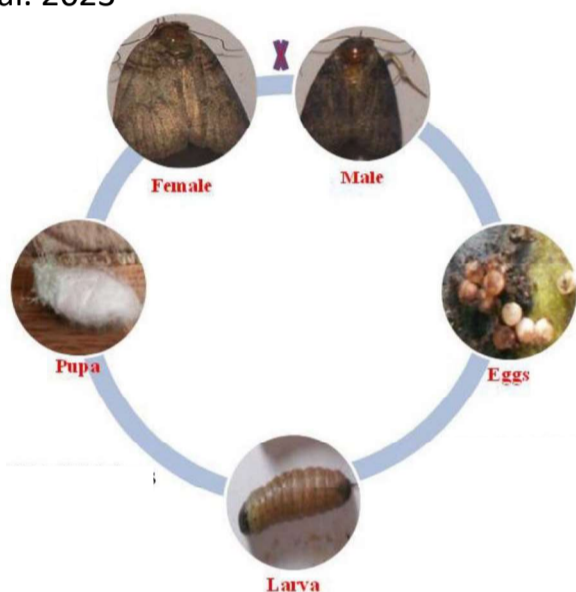
# Garella musculana



Images: Onur Aydoğanel et al. - Cengiz Bostanci et al. - İbrahim Yildirim et al. (TR)

## Life cycle

Khan et al. 2023

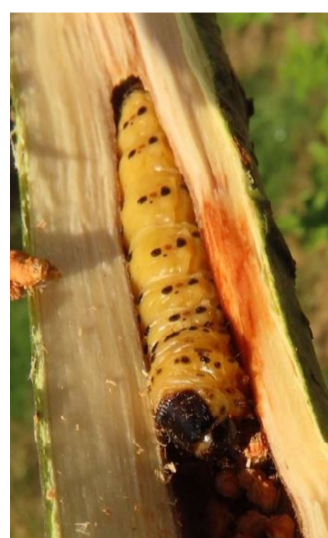


## Surveillance methods

- Infested plants can be detected based on visual symptoms
- Additionally, on young trees, trapping corrugated cardboard bands can be used to catch full-grown larvae moving to the bark to pupate
- Fallen fruit and pruning plant residues should be inspected for pest presence
- Aggregations of pupae are easy to detect under loose bark and in other refuges

## Similar species

- If fruit damage is detected, it may be confused with damage of the codling moth, *Cydia pomonella*, whose larvae are paler and have shorter hairs
- Shoot damage can be confused with that of the leopard moth, *Zeuzera pyrina*, whose larvae are larger with prominent dark warts



*Zeuzera pyrina* larva  
©Ruben Meert



*Cydia pomonella* larva  
©Gilbert De Ghesquière

## Pathways

Plants for planting, wood with bark, cut branches and infested nuts provide pathways for entry

## Contact us!

Jochem.Bonte@ilvo.vlaanderen.be

## Learn more about *Garella musculana*:

The research that yielded this info sheet, was funded in part by the Belgian Federal Public Service Health, Food Chain Safety and Environment through the contract RT 23/03 EMPHYPEST 1

