

## How to identify *Aromia bungii*?

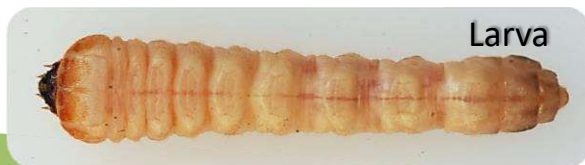
### Adult beetles (= longhorn beetles)

- 2.2 - 3.8 cm long
- Elongated body: 4 times longer than wide
- Body completely black with a blue iridescence, except for the red pronotum (neck)
- Pronotum (neck) with a spine on each side
- Antennae and legs completely black
- Antennae in females as long as the body and in males longer than the body



### Larvae

- Pale yellowish white with a dark head
- Without legs
- 1 - 4 cm long
- The larvae cannot be distinguished from those of other species of longhorn beetles.



## Can you help us?

*Aromia bungii* is included in the **EPPO A1 list**. This list contains plant-harmful organisms that do not yet occur in the EU, but cause **great damage** to many wild and cultivated plants. Therefore, it is important to report if you have seen this insect. **Early detection** allows a quick and efficient implementation of control measures so that this invasive exotic **cannot establish itself**.

If you spot *Aromia bungii*:

- Does the insect have a **red pronotum (neck)** and **long antennae**?
- If possible, take a photo of the insect and note the precise location.
- Report via [waarnemingen.be/species/Q-organismen](https://waarnemingen.be/species/Q-organismen)

## More info?

**Jochem Bonte**

ILVO – Plant Science Unit  
Burg. Van Gansberghelaan 96  
9820 Merelbeke

[Jochem.bonte@ilvo.vlaanderen.be](mailto:Jochem.bonte@ilvo.vlaanderen.be)

Tel. 09 272 24 60



project BEWARE&NOTE (RT 19/03),  
financed by FOD



# STOP *Aromia bungii*

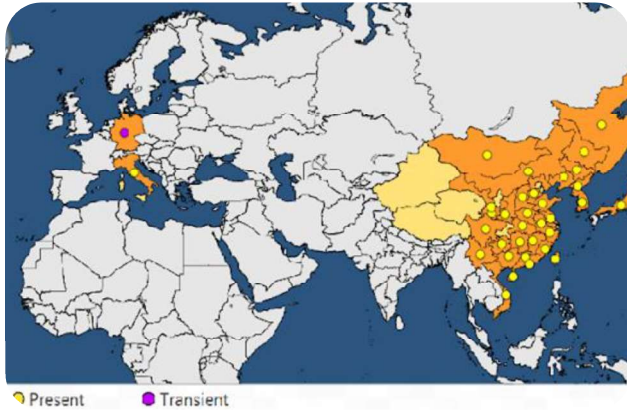
— An invasive exotic species —

with a taste for *Prunus*



In collaboration with EUPHRESKO and EPPO [www.eppo.int](http://www.eppo.int)

## Distribution



The origin of the beetle is Asia. In 2011, a single male was found on a **plum tree** in **Germany**. In 2017, another infested tree with beetles was found there. In 2012 and 2017, there were also reports from **Italy**, where the beetles were found in different locations on both prunes and apricots.

*Aromia bungii* is spread mainly through international trade in plants and wood packaging material.



## Damage symptoms



- **Red-brown larval frass** (sawdust) on the ground around the trunk
- **Oval holes** (6-10 x 10-16 mm) in the bark
- Damage in the first **30 cm above the ground**
- **Oval** galleries in the wood



## Host plants

This beetle is only found on trees. The relevant species for Belgian agriculture are: the **plum tree** (*P. domestica*), the **sour cherry tree** (*P. cerasus*) and the **cherry tree** (*P. avium*).

Poplar trees are also among the host plants.

